

# 標準リチウムイオン電池パック (1S1P)

## OTTLI106600

初期費用を抑え、短期間での供給が可能な標準パック

### 特長 Features

- 開発費・金型費・認証費が不要
- 一次／二次保護機能が充実
- 落下、衝撃に強い（セルホルダーによる固定）
- 急速充電、高レート放電に対応
- セル温度検知用 NTC サーミスタ搭載
- MOQ：600pcs
- 認証：UN38.3、PSE（要機器組み込み落下試験）  
IEC62133-2、CE（EMC および電池規則）



**1S1P**

Lithium Ion Battery Pack

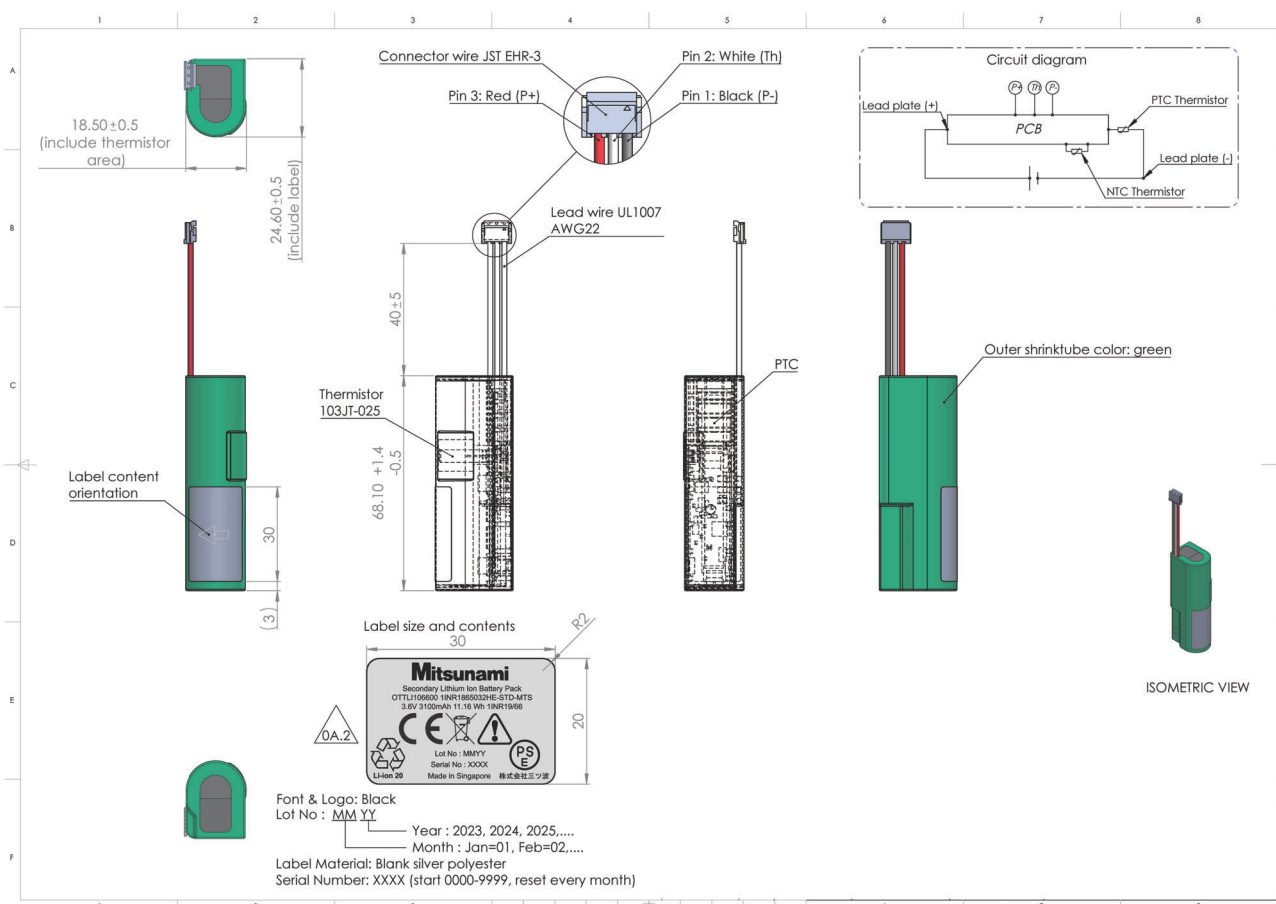
### 一般仕様 General specifications

Item		Specification
Capacity	Minimum	3100mAh by standard charge and discharge
	Nominal	3200mAh by standard charge and discharge
Nominal Voltage		3.60V
Device Discharge Cut-off Voltage		3.00V (Recommended)
Charging Current		Std Charge = 1.55A
		Fast Charge = 3.00A
Charging Voltage		4.20V
Continuous Discharge Current (Max)		3.00A
Internal Resistance		Less than 100mohms
Weight		65grams +/- 5grams
Operating Temperature		Charge 0°C ~ 45°C 45°C ~ 60°C (Max 4.1V)
		Discharge -20°C ~ 60°C
Storage Condition		1 year -20°C ~ 25°C
		3 months -20°C ~ 45°C
		1 month -20°C ~ 60°C
Connector Wire Rating Current		3.00A

## 保護回路仕様 (@25degC) Protection circuit specifications

No.	Item	Specification	Unit
1	Over-charge Detection Voltage	4.28 ± 0.020	V
2	Over-charge Release Voltage	4.08 ± 0.050	V
3	Over-charge Detection Delay Time	1.0	sec
4	Over-discharge Detection Voltage	2.80 ± 0.050	V
5	Over-discharge Release Voltage	2.80 ± 0.050	V
6	Over-discharge Detection Delay Time	32	msec
7	Over-current Discharge	3.5–7.4	A
8	Over-current Discharge Delay Time	16	msec
9	Over-current Charge	3.5–7.4	A
10	Over-current Charge Delay Time	16	msec
11	Short Circuit Detection Delay Time	280	μsec

## 外形図 Dimensions



連絡先

株式会社三ツ波  
 みらい事業推進部  
 東京都品川区西五反田2-30-11  
 TEL: 03-3492-7780

20240718

**Mitsunami**  
 Proposal for electronics